



Always reliable

B/C

In CMPC we are committed to provide high quality products and offer an excellent service. That is why we have been developing SELEX PLYWOOD: a stable and reliable Plywood panel with high quality and amazing appearance.

- ▶ High visual appearance
- ▶ Special for decorative uses
- ▶ Consistent quality
- ▶ Easy to work with
- ▶ Manufactured from sustainable managed forest FSC® certified



* Ask about our FSC® certified products.

Product benefits and applications

- A multipurpose attractive quality panel.
- Suitable for structural applications such as roofing, flooring and wall sheathing.
- Easy to handle due to its excellent strength to weight ratio.
- Outstanding visual face without open defects.

Features

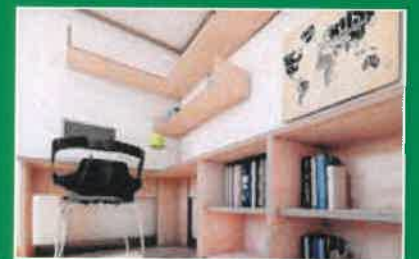
	B	C
Finishing		
▶ Sanding grade	150	120
Natural defects		
▶ Sound knots	Up to 25 mm. wide	Up to 40 mm. wide
▶ Unsound knots	Repaired, up to 25 mm. wide	Up to 40 mm. wide
▶ Knot holes	Not allowed	Up to 25 mm. wide
▶ Pitch pockets	Up to 25 mm. wide	Allowed
▶ Bark pockets	Not allowed	Allowed
▶ Freckles	Allowed	Allowed
Machining defects		
▶ Open splits	Up to 1 mm. wide	Up to 25 mm. wide
▶ Open cracks	Up to 1 mm. wide	Up to 25 mm. wide
▶ Fungal stains	Allowed	Allowed
▶ Roughness	Allowed	Allowed
Repairs		
▶ Inner splits in knots	Allowed	Unrepaired, up to 1 mm. wide
▶ Routings with polyurethane	Occasionally	Not applicable
▶ Putty patches	Allowed	Not applicable
▶ Single wooden patches	Allowed	Not applicable
▶ Double wooden patches	Allowed	Not applicable
▶ Triple wooden patches	Allowed	Not applicable



Concrete forming and base for laminating.



Transportation decking and flooring.



Fine Furniture and Cabinets with high stability and endurance.

General Specifications

Dimensions: 8' x 4' (2,440 x 1,220 m)	Thickness (mm)	6,5	9	12	15	18	21	25
	Nº of plies	3	3	5	5	7	7	9
Density	▶	480 - 550 kg m ³						
Adhesive	▶	CARB 2 and E1 compliant						
Structural certification	▶	EN 13986-CE2 + (Structural), EN 636-2S, EN314-2 Class 3						
Forestry certification	▶	Manufactured from sustainable managed forest FSC® certified						



MATERIAL SAFETY DATA SHEET

CMPC Maderas S.A
Planta Paneles

Mininco, Chile
Telephone 56-43-2636810
56-43-2636816

Version: 26/05/2014

HEALTH HAZARD DATA

DUST:

Wood dust can irritate eyes and breathing passages. Some wood species may cause skin or respiratory irritation. Contact by susceptible persons may cause allergies.

FORMALDEHYDE:

These products release very low amounts of formaldehyde. Formaldehyde may be irritating to the eyes, nose, throat and skin. It may aggravate existing respiratory problems and cause allergies to susceptible persons.

Formaldehyde is listed by IARC, NTP and OSHA as Probable Human Carcinogen.

ROUTES OF ENTRY:

Inhalation. Skin contact with wood may evoke allergic contact dermatitis.

SPECIAL PROTECTION DATA

RESPIRATORY PROTECTION:

None usually required if dust and formaldehyde concentrations are within acceptable limits. Approved dust/formaldehyde respiratory and goggles are recommended when the allowable exposure limits may be exceeded.

PROTECTIVE GLOVES:

Not required. Cloth, canvas or leather gloves are recommended.

EYE PROTECTION:

Goggles or safety glasses are recommended when machining product.

LOCAL EXHAUST:

Provide local exhaust when machining product.

MECHANICAL (GENERAL):

Provide general ventilation in processing and storage areas as needed so that exposure limits are met.

SPECIAL:

Special-contained breathing apparatus (SCBA) recommended when fighting fire.

DISCLAIMER:

This MSDS is intended to be used solely for safety education and not for use as specifications or warranties. The information in this MSDS is provided without any representations or warranties regarding the accuracy or correctness. Since the handling, storage and use are beyond our control, CMPC Maderas S.A. Planta Paneles. assumes no responsibility and disclaims liability for any loss, damage or expense arising there from.

Fabian Oporto Lagos
Deputy Manager of Quality
and Product Development
CMPC Maderas S.A. Plywood Mill

